











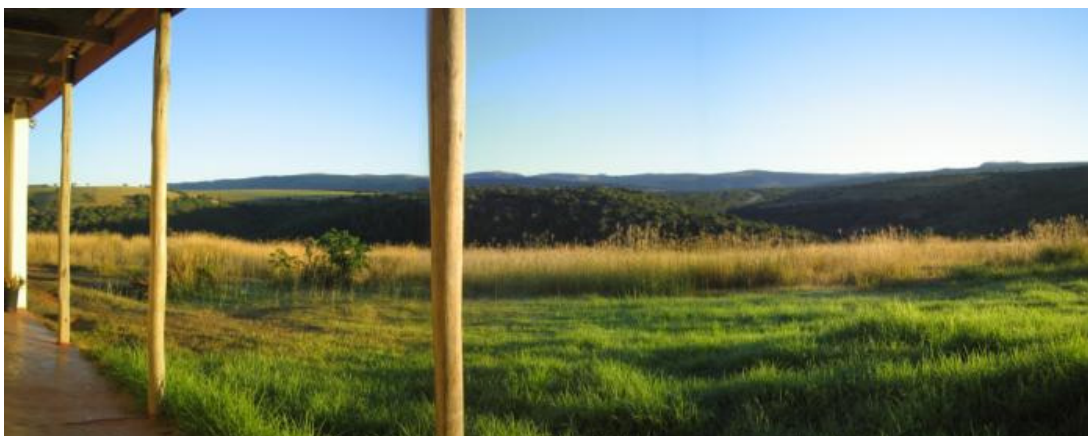
# Cottage Information



**Please read the following information that may be useful!!**

-  Please no smoking or pets!
-  All water comes from the 2 rainwater tanks next to the cottage.
-  A water pump provides pressure but can be switched on/off as desired on the main DB board in the kitchen. You may find switching it off at night suits you!
-  The cottage has flood lights in the front if you want to enjoy the view at night. Please switch them off when not needed.
-  The burglar alarm is linked to HITEC Security and they need to be called if there is a false alarm (046 636 1667)
-  Feel free to enjoy the farm and take walks (bird watching and game) if you want to. Be careful of snakes, etc
-  Please respect the privacy to the tenants and their horses! Close all gates as required.
-  The waste water is processed by a septic tank so **PLEASE DO NOT** throw foreign objects down the drains or toilet.

Call: Mark +27 (0)82 673 8005 or Anneliese +27 (0)76 150 4355  
Fax: +27 (0)860 653 7199 Email: [info@aloeridge.org](mailto:info@aloeridge.org) Web: [www.aloeridge.org](http://www.aloeridge.org)  
Bank Details: FNB, Grahamstown, Cheque Account: 62126908914 (Please fax or email Proof of Payment!)



View from Verandah